

8. Outer Mirror Assembly

A: REMOVAL

Refer to "DISASSEMBLY" for removal procedures of scalp cap and mirror face. <Ref. to GW-27, DISASSEMBLY, Outer Mirror Assembly.>

1) Disconnect the ground cable from battery and wait for at least 60 seconds before starting work. <Ref. to NT-5, BATTERY, NOTE, Note.>

NOTE:

For models other than STI model, disconnect the ground terminal from battery sensor.

2) Remove the trim panel - front door. <Ref. to EI-56, FRONT DOOR, REMOVAL, Door Trim.>

3) Turn over the sealing cover - front door.

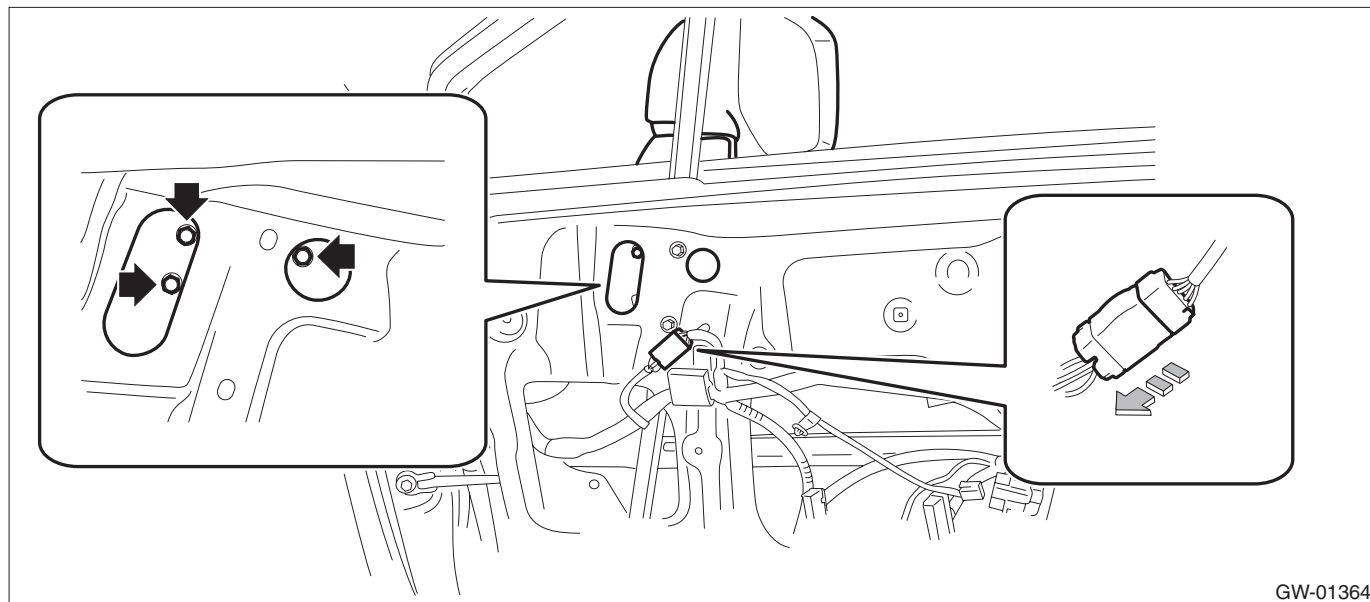
CAUTION:

- Carefully remove the butyl tape. Excessive force will easily break the sealing cover - front door.
- If the sealing cover - front door gets broken, replace it with a new part.
- Be careful not to allow the butyl tape to contact any trims and seats because the butyl tape, which has a strong adhesive force, is difficult to remove once it adhered.

(1) Remove the connector clip that is installed on the panel assembly - front door, and disconnect the connector.

(2) Carefully remove and turn over the sealing cover - front door within the area where the operation can be performed.

4) Remove the bolts to remove outer mirror assembly.



B: INSTALLATION

CAUTION:

Be careful not to catch the harness in between the parts.

1) Install the outer mirror assembly.

Tightening torque:

7.5 N·m (0.8 kgf-m, 5.5 ft-lb)

2) Install the sealing cover - front door.

3) Install the trim panel - front door.

4) Connect the battery ground terminal. <Ref. to NT-5, BATTERY, NOTE, Note.>

NOTE:

For models other than STI model, connect the ground terminal to battery sensor.

C: DISASSEMBLY**CAUTION:**

- When removing the mirror - repair, be careful not to damage the back surface of mirror - repair with a flat tip screwdriver.

- When installing the mirror - repair, insert the connector and clip securely.

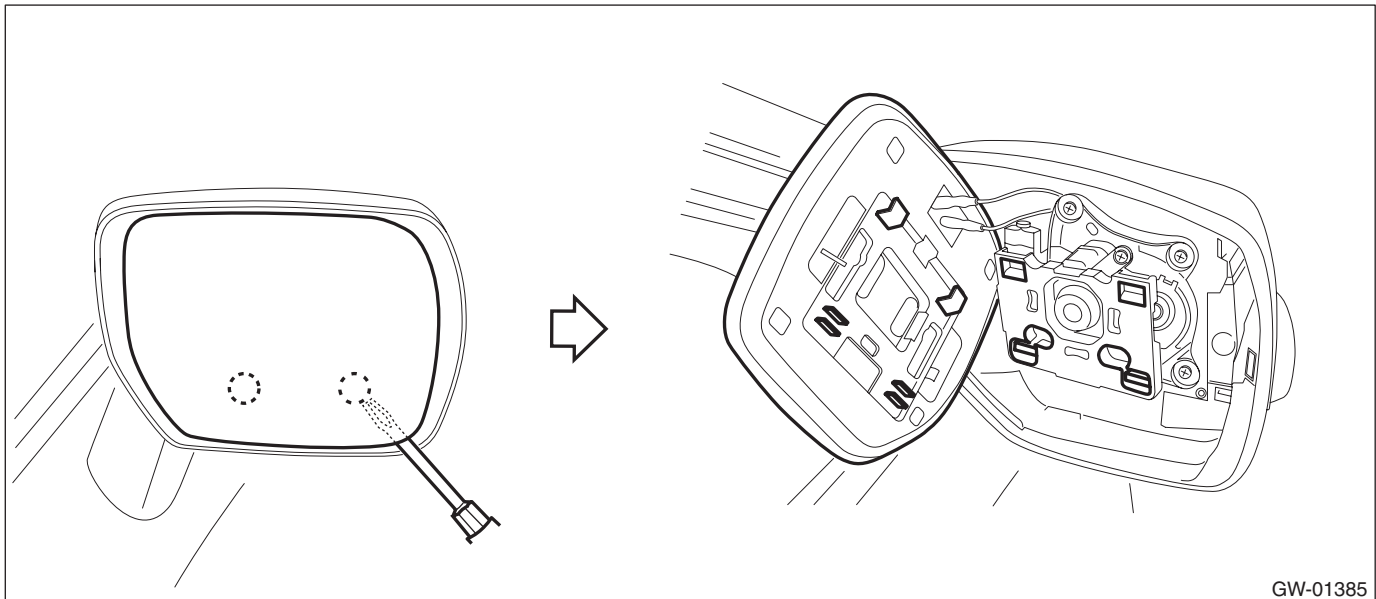
- 1) Operate the remote control mirror switch to face the mirror - repair upward.
- 2) Disconnect the ground cable from battery and wait for at least 60 seconds before starting work. <Ref. to NT-5, BATTERY, NOTE, Note.>

NOTE:

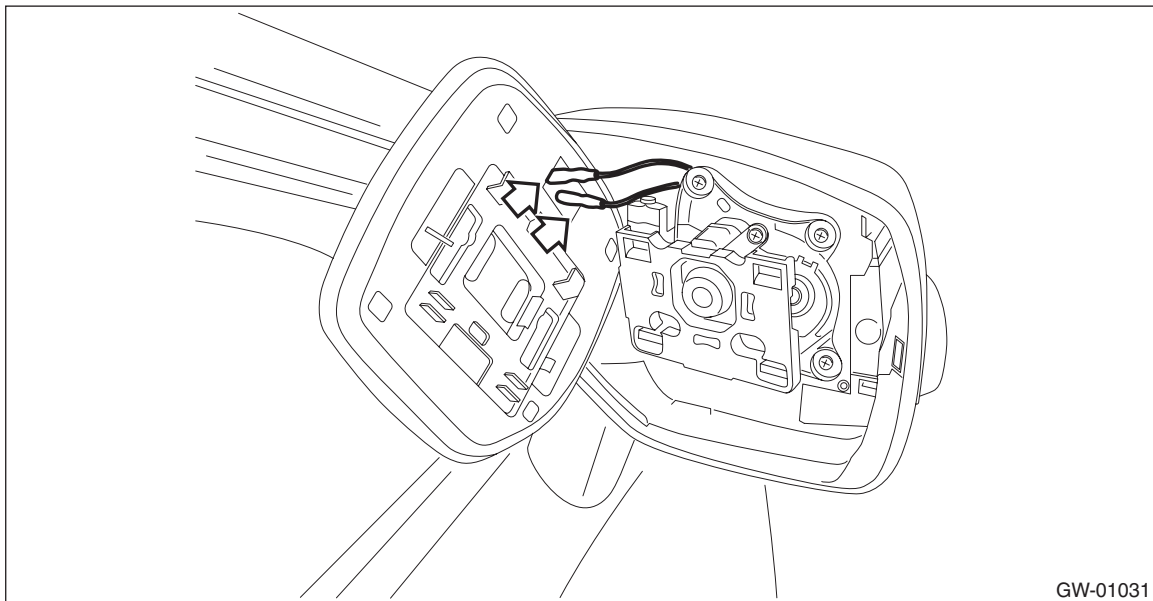
For models other than STI model, disconnect the ground terminal from battery sensor.

- 3) Remove the mirror - repair.

- (1) Using a flat tip screwdriver or similar tool, release the engagement shown in the figure, and slide the mirror - repair downward to remove.



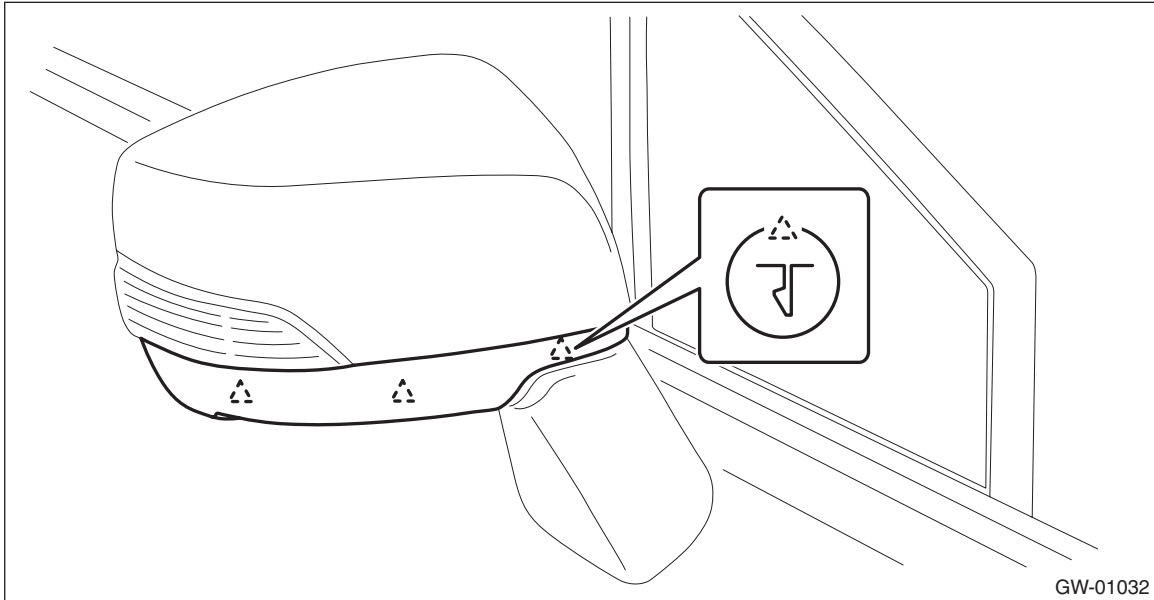
- (2) Disconnect the mirror heater connector. (Model with mirror heater)



Outer Mirror Assembly

GLASS/WINDOWS/MIRRORS

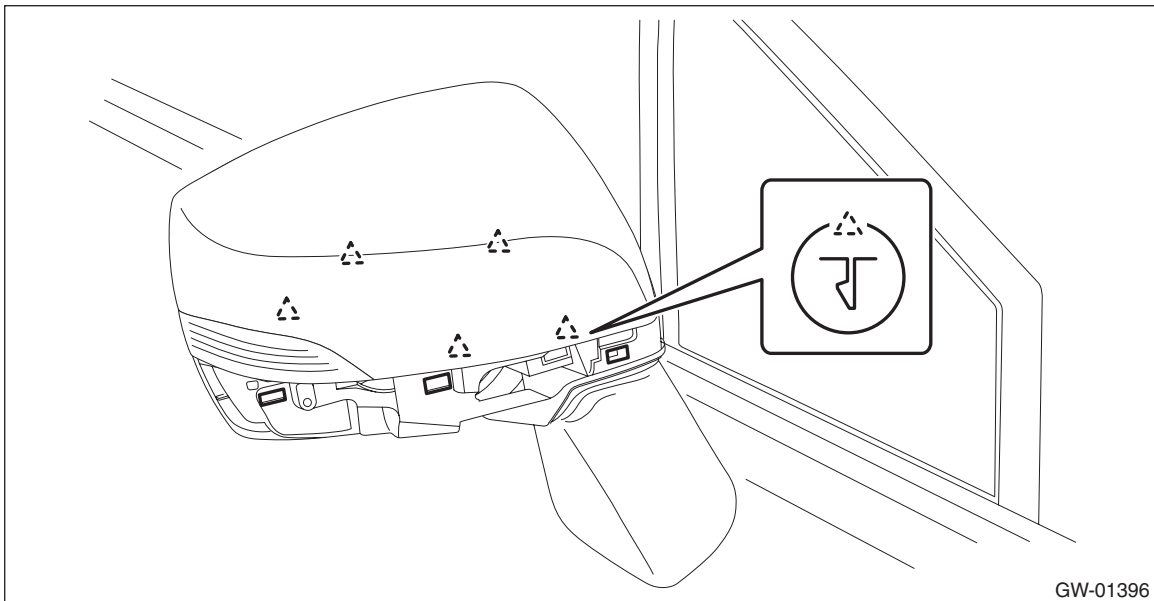
4) Release the claws, and then remove the cover - cap outer mirror lower.



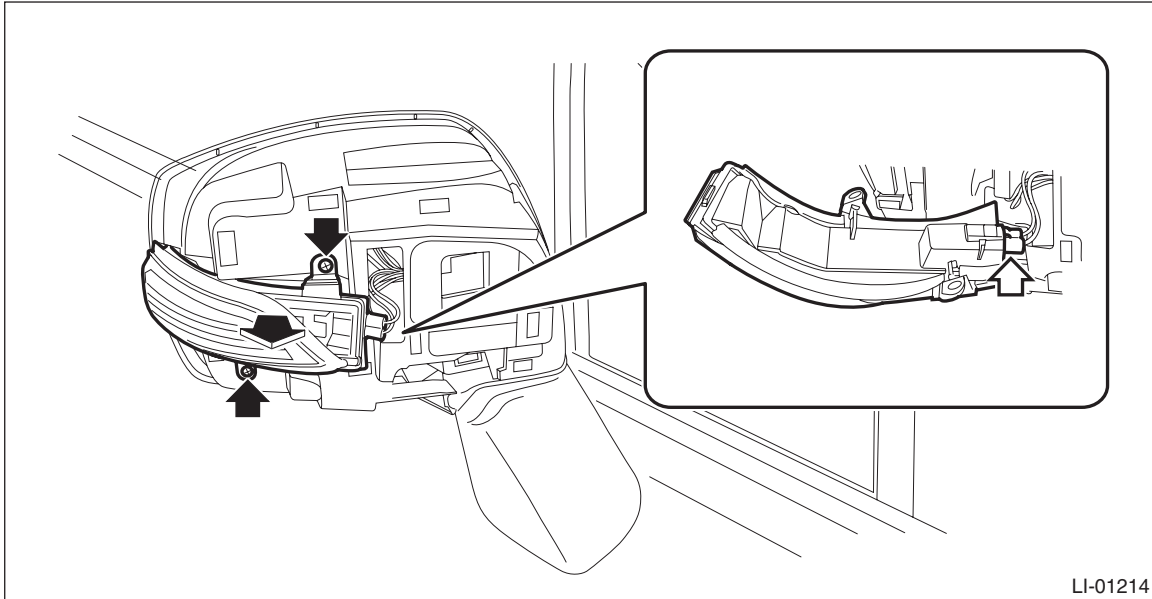
5) Release the claws, and then remove the cover - cap outer mirror.

CAUTION:

Be careful not to apply excessive force when removing the cover - cap outer mirror, as the lower hooks may become damaged.



- 6) Remove the light assembly - side turn mirror. (Model with side turn signal light)
- (1) Remove the screws and pull out the light assembly - side turn mirror to the front of the vehicle.
 - (2) Disconnect the connector and remove the light assembly - side turn mirror.



LI-01214

D: ASSEMBLY

CAUTION:

Be careful not to catch the harness in between the parts.

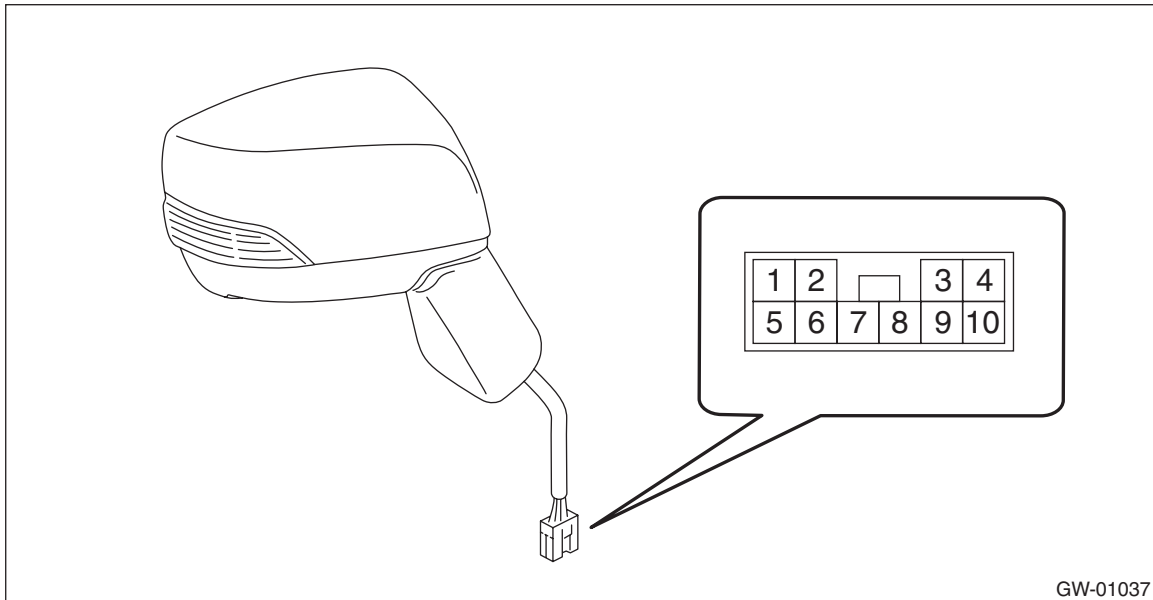
- 1) Install the light assembly - side turn mirror.
- 2) Install the cover - cap outer mirror.
- 3) Install the cover - cap outer mirror lower.
- 4) Check that all the claws are securely engaged.

Outer Mirror Assembly

GLASS/WINDOWS/MIRRORS

E: INSPECTION

- 1) Disconnect the outer mirror connector.
- 2) Apply battery voltage between the outer mirror connector terminals and check the mirror operation.



Terminal No.	Inspection conditions	Switch position
—	—	OFF
3 (+) — 8(–)	Apply battery voltage between terminals.	UP
8 (+) — 3(–)	Apply battery voltage between terminals.	DOWN
7 (+) — 3(–)	Apply battery voltage between terminals.	LEFT
3 (+) — 7(–)	Apply battery voltage between terminals.	RIGHT

- 3) If it does not operate normally, replace the outer mirror assembly.